



# The world's leading sustainability recruiter

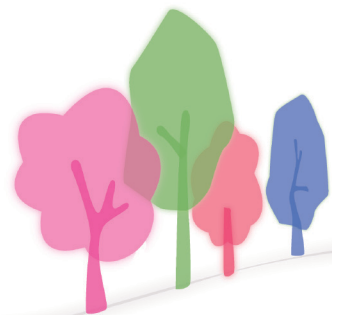
Sustainability

Corporate Responsibility

Climate Change

Energy

Environment



## UK Office

131 - 151  
Great Titchfield Street  
London W1W 5BB

t: +44 (0)20 3170 8030

## US Office

1919 West Addison Street  
Chicago, Illinois  
60613

t: +1 773 327 0963

# Sustainability Recruitment

Acre has been sourcing the best talent in the fields of climate change, corporate responsibility, sustainability and environment since 2003.

As this diverse market and the issues at its heart have evolved, the demand for green professionals has increased dramatically. Acre has led the way in green recruitment, providing an unrivalled understanding of the green job market, and successfully sourcing the most talented individuals for our clients around the world.

“Acre was the only specialist search firm which was able to assist with our CSR search requirement. They were professional and extremely knowledgeable and we would not have been able to hire the talent we did, without their expert assistance.”

EMEA Resourcing Manager,  
Bank of America

“Marks & Spencer worked with Acre on specific energy assignments and they understood our recruitment needs well. Their knowledge of the marketplace was impressive and they brought an informed and professional approach to the process.”

Senior Recruitment Manager,  
Marks & Spencer



Acre has been leading in the area of green recruitment since 2003. We have built an unsurpassed reputation and placed hundreds of professionals, many of whom are now amongst the most influential leaders in the space.

---

## About Us

We are a talented and passionate team of recruitment professionals based in Central London and Chicago. Our staff have extensive experience and our understanding of recruiting in the sustainability space is second to none. Since 2003, we have built long-term partnerships with some of the World's largest organisations, innovative start-ups and NGOs to become their preferred sustainability recruitment solution.

With the most established global network of sustainability professionals, we have access to the cream of the world's talent with a range of backgrounds - including technical, communications and commercial specialists. We use every method available, including headhunting, market mapping, database search, social networking and sector-specific advertising to find the best people for you in the most efficient manner.

At Acre, we are passionate about our work. Amongst a range of added-value services, we conduct innovative research to advance the green job market. In conjunction with our partners we publish the highly renowned CSR Salary Survey and Carbon Salary Survey.

## Bespoke Approach

For every recruitment project we take a bespoke, project managed approach.

We clearly identify the people needed and efficiently manage the recruitment process to secure the best talent for your business.



# Acre Recruitment Solutions

Our services range from executive search to contract recruitment.

Whether you're looking for the most established industry leaders or the brightest emerging talent, Acre is your long-term partner for sustainability recruitment.

## Permanent and Contract staff

Acre has the most extensive network of talented green professionals anywhere in the world – and it's growing daily. We have unparalleled experience in recruiting permanent, contract, and consulting staff.

## Executive Search Management

Acre's Executive Search Management solution is the most effective means to reach the most targeted audience possible, through full access to our unrivalled networks, direct marketing campaigns, and proactive headhunting. Our approach guarantees your project as a priority, and will identify a shortlist of candidates of the highest quality for final selection.

## Managed Advertising Programmes

Your job adverts will benefit from the brand power of the leading recruiter in the sustainability space. Our unrivalled sector-specific and broad-media advertising experience and bespoke deals ensures the best possible response.

## Research & Advice

Our involvement in the sustainability sector goes beyond recruitment - we have always strived to be experts in every sense and to develop industry awareness throughout the green space. We offer salary benchmarking advice and publish the industry leading CSR Salary Survey - [www.csrsalariesurvey.com](http://www.csrsalariesurvey.com) - and the groundbreaking Carbon Salary Survey - [www.carbonsalariesurvey.com](http://www.carbonsalariesurvey.com).

"A transition to a low carbon, resource-efficient, global green economy is the challenge but also the opportunity for this generation. The Carbon Salary Survey underlines that this transition is underway across a range of professions and livelihoods as part of an employment revolution."

Achim Steiner,  
UN Under-Secretary and Executive Director,  
United Nations Environment Programme  
(Acre 2009 Carbon Salary Survey)

## International Recruitment Services

Acre is a global recruitment company for global issues. With offices in Chicago and London and networks around the world, we have experience working with a variety of international clients and candidates.

"I have developed a good working relationship with the staff at Acre, they take the time to understand our needs and through this we have made a number of successful placements."

Technical Manager, Ecology  
SLR Consulting Ltd.

## Responsible Approach

We aim to run our business in the most ethical and sustainable way possible. We operate with maximum transparency with all our clients and candidates, and take a responsible and confidential approach in every aspect of our recruitment process.

We also strive to reduce our own environmental impacts. We have been awarded a bronze medal by The Mayor of London's Green Procurement Code for our procurement strategy. We also partner with and support a range of good causes which are close to our heart, such as Cool Earth ([www.coolearth.org/acre](http://www.coolearth.org/acre)) and the Zoological Society of London ([www.zsl.org](http://www.zsl.org)).

"If you work in the area of CSR, environment or ethical trading, and you're looking for your next move, you need to be advised by a consultancy that has an in depth knowledge of these quite specialist roles. Acre are, in my mind, the leading UK Recruitment consultancy in CSR and other roles aligned to 'sustainability'."

Group CSR Manager,  
Premier Foods plc

"Your consultants have really affirmed my affinity for your company, largely due to the level of personal interest that your consultants invested in me as a candidate. Your team was instrumental in helping me to keep the faith"

Global Environmental Manager  
Belron



## A Trusted Brand

Acre is the number one destination for job seekers in the green space. We have over 20,000 unique users visiting our website every month and the largest global network of sustainability and environmental specialists anywhere in the world.

### The Leading Online Resource

Research proves job seekers tend to use online resources to research their next career move. Rather than heading directly to a specific web page or job board it has been demonstrated that a search engine, such as Google, is usually the first point of call. We invest heavily in Search Engine Optimisation to ensure job seekers within the green market are directed to the Acre website, growing our network and reinforcing the Acre brand as the most trusted in the sector.

### Experts in Strategic Advertising

Our strategic advertising campaigns are tested and analysed for success to yield a high quality response. We actively engage with green professionals through social networking and industry websites and regularly attend and host industry events.

### Thought Leadership

Our staff and Directors are frequently called upon for thought leadership and comment in trade and national press, and have presented at top industry events and conferences.

# Next Steps

We will be pleased to discuss your specific requirements and long-term recruitment strategy.

If you have any questions about Acre or our recruitment process, please don't hesitate to get in touch.

Acre Head Office, London

Beth Mitchell  
Commercial Manager  
t: +44 (0)20 3170 8034  
e: [beth.mitchell@acre-resources.com](mailto:beth.mitchell@acre-resources.com)

US Office, Chicago

Martin Killeen  
US Recruitment Manager  
t: +1 773 327 0963  
e: [martin@acre-resources.com](mailto:martin@acre-resources.com)



Acre Resources Ltd. • 131-151 Great Titchfield St. • London W1W 5BB  
t: +44 (0)20 3170 8030 • [www.acre-resources.com](http://www.acre-resources.com) • e: [mail@acre-resources.com](mailto:mail@acre-resources.com)